

Exclusive Charter

PREMIER
WORLD DISCOVERY



Hot Springs Village Voice Travel Club presents

Holland Tulips & Rhine River Castles Cruise

featuring Amsterdam & 7 Nights aboard the Amadeus Cara

10 Days **March 26, 2025**



**BOOKING
DISCOUNT!**

Save \$200 per person
\$400 per couple*

*See Reservation Info for
Booking Discount details



Cochem



Strasbourg

10 Days **March 26, 2025** (Lucerne Pre-Tour Departs March 24)

Holland Tulips & Rhine River Castles Cruise

Day 1 - DEPART US - OVERNIGHT FLIGHT TO EUROPE

Day 2 - ARRIVE ZURICH

Arrive Zurich, Switzerland & Meet your PWD Tour Manager/Representative(s)
Travel to Basel via motorcoach & Board the **Amadeus Cara** for 7 Night Cruise
Ship Departs from Basel early evening - **Welcome Dinner Onboard**

✕ (D) *Overnight - Amadeus Cara*

Day 3 - STRASBOURG

Morning - Arrive Kehl/Strasbourg - **Strasbourg City Tour with Canal Boat Cruise**
Afternoon - Leisure time in Strasbourg
Ship Docked into late evening in Kehl/Strasbourg - Ship Departs

✕ (B,L,S,D) *Overnight - Amadeus Cara*

Day 4 - SPEYER - MANNHEIM

Morning - Arrive Speyer - **Speyer Walking Tour**
Afternoon - Cruise to Mannheim - Leisure time or *Optional to Heidelberg with Castle*

✕ (B,L,S & D) *Overnight - Amadeus Cara*

Day 5 - RÜDESHEIM - KOBLENZ

Morning - Arrive **Rüdesheim** - Walk into town on own to explore or *Optional Rüdesheim Vineyard Wine Tasting & Drosselgasse*

Cruise through the **Rhine River Gorge**, a UNESCO Heritage Site

Afternoon arrive Koblenz - **Koblenz Walking Tour**
✕ (B,L,S & D) *Overnight - Amadeus Cara*

Day 6 - KOBLENZ - COCHEM

Morning - Moselle River Cruising
Afternoon - Arrive Cochem - **Cochem Walking Tour, Castle Visit* & Wine Tasting**

Early Evening - Ship Departs for Cologne
✕ (B,L,S & D) *Overnight - Amadeus Cara*

Day 7 - COLOGNE

Morning - Arrive Cologne - **Cologne Walking Tour & Kolsch Beer Tasting**
Afternoon - Ship departs Cologne for Amsterdam

✕ (B,L,S & D) *Overnight - Amadeus Cara*

Day 8 - AMSTERDAM SIGHTSEEING

Morning - **Amsterdam City Tour & Canal Cruise**
Afternoon - Amsterdam at leisure or *Optional to Volendam & Cheese Tasting*
Gala Farewell Dinner Onboard - Ship docked overnight in Amsterdam
✕ (B,L,S & D) *Overnight - Amadeus Cara*

Day 9 - DISEMBARK SHIP - AMSTERDAM

Morning - **Zaanse Schans Windmills**
Afternoon - Visit to **Keukenhof Gardens** - Arrive Amsterdam Hotel for 1 Night Stay
✕ (B) *Overnight - Amsterdam*

Day 10 - AMSTERDAM - FLIGHT HOME

Transfer to the Amsterdam Airport - Flight Home
✕ (B)

B-Breakfast Hotel/Onboard • S-Snacks Onboard afternoon and/or evening
L-Lunch Onboard • D-Dinner Onboard with Beer & Hand Selected Wines

CITIES & PORTS

AMSTERDAM & KEUKENHOF GARDENS

Amsterdam started as a small fishing village in the late 12th century & today is one of the world's most important ports. The city has one of the largest historic centers in Europe with about 7,500 registered historic buildings & 90 islands linked by 400 bridges. Enjoy an **Amsterdam City Tour & Canal Cruise** featuring views of beautiful homes through the intricate canal system. Outside of Amsterdam, visit the famous **Keukenhof Gardens**, the Garden of Europe and the world's 2nd largest flower garden with 7 million bulbs planted annually. This showplace for the tulip growers of the Netherlands features numerous sculptures between the flower beds to create harmony between art and nature. Visit the famous village of **Zaanse Schans** featuring windmills, wooden shoes & historic buildings.

STRASBOURG, FRANCE

Capital city of the Alsace region in northeastern France, Strasbourg is situated on the Rhine at the German border. Enjoy a **Strasbourg City Tour & Canal Boat Cruise**. Start with a short coach trip through the city, then walk through the lovely, historic old town and see the famous cathedral. During a boat cruise discover the famous quarter, "Petite France". This former mill and tanner district still maintains its medieval charm. See some of Strasbourg's famous half-timbered houses, and the Council of Europe.

SPEYER

Arrive in Speyer, one of Germany's oldest cities, known for its cathedral, numerous churches and the 13th-century Altpörtel ("Old Gate"). Explore the city during your **Speyer Walking Tour**. Cruise to Mannheim & maybe take an optional excursion to historic Heidelberg to visit the red-walled castle with beautiful views of the Neckar Valley.

RÜDESHEIM - RHINE RIVER GORGE - KOBLENZ

Enjoy a stroll through **Rüdesheim** and explore the Drosselgasse, a narrow alley lined with wine taverns and restaurants on your own or maybe take an optional **Rüdesheim Wine Tasting Tour**. Today your ship cruises through the **Rhine River Gorge**, a UNESCO Heritage Site and the most stunningly beautiful stretch of the river with hillsides dotted with fairy-tale castles, historic towns and vineyards. Arrive in **Koblenz** and enjoy a **Koblenz Walking Tour** of this charming Rhineland town situated at the confluence of the Rhine & Moselle Rivers.

COCHEM

Cochem is a charming town on the Moselle River, surrounded by vineyards. Enjoy a **Cochem Walking Tour** featuring the picturesque old town with half-timbered houses, a historic market square, and a baroque town hall. Enjoy a **Wine Tasting** at a local winery including the region's famous Riesling. Then visit either the **Reichsburg** or the **Eltz Castle**, both majestic castles offer stunning views.

COLOGNE

Cologne is Germany's 4th largest city and located on both sides of the Rhine. Enjoy a **Cologne Walking Tour** of the Old Town (Altstadt) and see the massive iconic 13th century Gothic cathedral. Explore the dock side taverns, cafes and shops.

Optional 2 Night Lucerne, Switzerland Pre-Cruise Extension
\$725 pp dbl +\$350 single supplement

Day 1-March 24	Overnight Flight to Europe
Day 2-March 25	Arrive Zurich
Meet your Tour Manager - Transfer to Lucerne - Check-in for a 2-night stay in this scenic city situated on Lake Lucerne <i>Overnight - Lucerne</i>	
Day 3-March 26	Lucerne Sightseeing
Morning - Lucerne Walking Tour with Chapel Bridge & Old Town Afternoon - Time at leisure in Lucerne (B) <i>Overnight - Lucerne</i>	
Day 4-March 27	Lucerne to Basel
Morning - Transfer to Basel for Basel City Tour Afternoon - Board the Amadeus Cara in Basel for 7 Nights (B)	

Lucerne Optional Extension Includes: 2 Nights Hotel in Lucerne, Basel City Tour, Lucerne Walking Tour, Tour Manager, 2-Breakfasts, Transfers to Lucerne and to Basel & Ship.

Notes: Lucerne Extension must be booked at time of deposit. Due to group air policies outbound air 3/24/25 could be a different schedule than the rest of your group for Lucerne extension passengers • Lucerne extension is based on 20 passenger minimum



Amadeus Cara

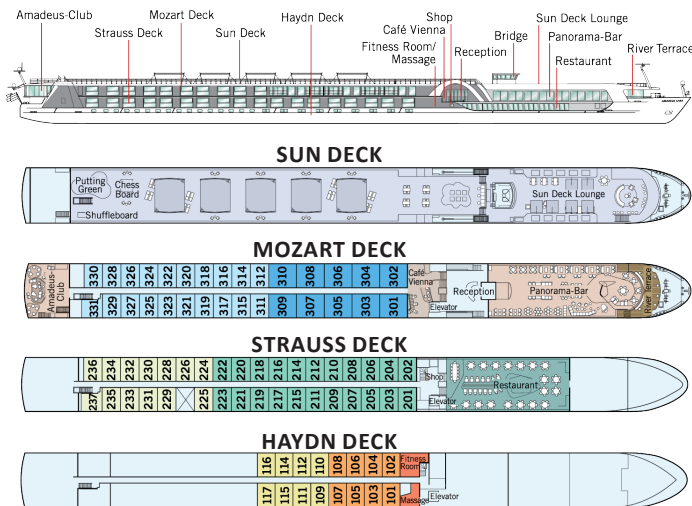


Fine Dining



Fitness Center

AMADEUS CARA DECK PLAN



THE SHIP - MS AMADEUS CARA

The innovative and custom designed 162 passenger Amadeus Cara, launched in 2022, offers all the amenities of a floating 5-star hotel. This Premium cruise ship features the most modern furnishings that blend masterfully with the architecture of the ship and a luxurious design that is the hallmark of the Amadeus fleet. The extensive Restaurant and the Panorama Bar offer divine views of the passing riverscapes, and the glass-shielded River Terrace & the Sun Deck allow you to enjoy the open air. The attentive English-speaking onboard service staff will see to your comfort with typical European hospitality. The cabin design plans are forward-thinking, bright & modern, all part of a premium focus with 71 large Staterooms & 10 Suites. The beauty of river cruising is that the most interesting destinations come to you. This Cara charter features English-only onboard commentary with inclusive shore excursions balanced with choice to simply relax onboard, get a spa treatment or add sightseeing with optional excursions.

ALL MEALS INCLUDED ONBOARD

Three meals daily are served graciously in the exquisite restaurant and feature local & international specialties. All dinners are four courses and are served with included Hand Selected Wines, Beer & Soft drinks. While dining, you have splendid views of the passing scenic landscapes through the large picture windows. Enjoy afternoon and/or late evening snacks in the lounge based on the daily schedule.

COMFORTABLE & INNOVATIVE STATEROOMS

After boarding, unpack once. All staterooms are larger than traditional river cruise cabins & offer excellent river views. The Mozart Deck features 10 Suites with Walk Out Balconies. The other 20 Staterooms on the Mozart Deck & 35 Staterooms on the Strauss Deck feature a Drop-Down Panoramic Window. The 16 Staterooms on the Haydn Deck have a fixed window. All staterooms are fully equipped with comfortable & modern furnishings including flat screen TV & large private bathrooms with shower.

SHIP TECHNICAL DATA

Launched: 2022 Staterooms/Suites: 71/10
Decks/Crew: 4/46 Max passengers: 162

ACTIVITY LEVEL

Easy **1** **2** **3** **4** Active

Notes - Excursions require moderate walking with some stair climbing possible.
-Hotel/Ship Check in time in Europe typically begins between 3-4 pm.

INCLUSIONS

- Roundtrip Airfare - LIT
- 1 Night Amsterdam Hotel
- 7 Night Cruise - Outside Cabin
- 21 Meals (8-B, 6-L & 7-D)
- PWD Tour Manager
- Hand Selected Wine & Beer with Dinners
- Wi-Fi Onboard
- Welcome & Farewell Dinners Onboard
- Ship Staff
- Baggage Handling
- Int'l Air Taxes/Fuel/Fees & Port Charges
- Hotel & Ship Transfers

EXCURSIONS/TOURS

- Amsterdam City Tour & Canal Cruise
- Keukenhof Flower Gardens
- Zaanse Schans Windmills Visit
- Strasbourg City Tour
- Speyer Walking Tour
- Rhine River Gorge
- Koblenz Walking Tour
- Cochem Walking Tour, Wine Tasting & Castle Visit
- Cologne Walking Tour & Beer Tasting

RATES

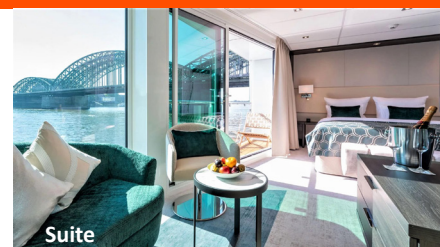
Cat E - Haydn Deck	\$5795 pp dbl*	\$5595 pp dbl with BD**	+\$1500 single
Cat D - Haydn Deck	\$6095 pp dbl*	\$5895 pp dbl with BD**	+\$1500 single
Cat C - Strauss Deck	\$6595 pp dbl*	\$6395 pp dbl with BD**	+\$1900 single
Cat B - Strauss Deck	\$6795 pp dbl*	\$6595 pp dbl with BD**	+\$1900 single
Cat A - Mozart Deck	\$6995 pp dbl*	\$6795 pp dbl with BD**	+\$2300 single
Suite - Mozart Deck	\$7495 pp dbl*	\$7295 pp dbl with BD**	+\$2800 single

*Regular Rate or **Save \$200 per person/\$400 per couple with Booking Discount Rates (BD)

STATEROOMS & SUITES



Mozart/Strauss Stateroom



Suite

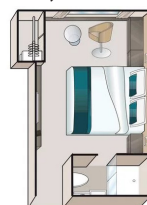
STATEROOMS - 172 or 188 SQ FT

All staterooms feature 2 twin beds that can be separated or put together, flat screen TV, shower, hair dryer, closet, phone, desk, chair & safe. Mozart & Strauss Staterooms feature panoramic Drop-Down Windows with 188 sq. ft. of floor space. Haydn Deck Staterooms feature a Fixed Window with 172 square feet of floor space.
(stateroom size & amenities can vary)

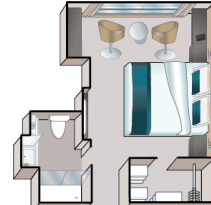
SUITE - 284 SQ FT WITH BALCONY

All suites are on the Mozart Deck and have panoramic windows with exterior Walk Out Balcony, two twin beds that can be separated or put together, a private sitting area, flat screen TV, mini-bar, private bath with shower, hair dryer, phone, closet, desk, chair, safe & offer 284 square feet of floor space.
(Suite size and amenities can vary)

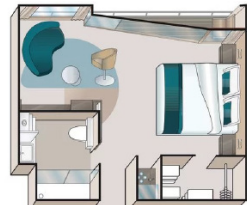
Stateroom Haydn Deck (172 sf)



Stateroom Strauss & Mozart Decks (188 sf)



Suite Mozart Deck (284 sf)



Reservation Form (River Cruise)

Holland Tulips & Rhine River
Castles Cruise
March 26, 2025
Booking #188466 (Web Code)

Contact Information/Mail Reservation Form to:

Hot Springs Village Voice Travel Club
C/O Premier World Discovery
1650 Pacific Coast Highway, Suite 202
Redondo Beach, CA 90277
877.953.8687 • info@premierworlddiscovery.com

Cabin Category Requested: *(All Cabin Categories are on a space available basis)*

Cat E: Cat D: Cat C: Cat B: Cat A: Suite:

Enclosed please find a deposit in the amount of \$ _____ (\$600 per person) to secure reservations for _____ # of people.

Premier's Travel Protection Plan (TPP): Yes, I (we) wish to purchase travel protection (TPP)
 No, I (we) decline travel protection (TPP)

Enclosed please find payment in the amount of \$ _____ (\$499 per person) to secure the Premier's Travel Protection Plan (TPP). *(TPP must be purchased with initial deposit)*

I / we want to purchase the Lucerne Pre-Cruise Extension*** (\$725 pp dbl/+\$350 SS) Yes No

***Please book Lucerne Ext with initial deposit. The Extension departs the US March 24.

TOTAL PAYMENT \$ _____ Make checks payable to: PREMIER WORLD DISCOVERY

RT AIR GATEWAY _____ ROOMMATE'S RT AIR GATEWAY _____

see flyer page 3 for included group RT gateway/departure city, additional charges apply for other RT air packages

To avoid change fees, submit Passport names (first/mid/last) exactly as they appear on Passports

Passport Name: _____

DOB (MM/DD/YY) _____ Gender M F

Passport #: _____ Exp Date (MM/DD/YY) _____

Country of Issuance _____

Roommate's Passport Name: _____

DOB (MM/DD/YY) _____ Gender M F

Roommate's Passport #: _____ Exp Date (MM/DD/YY) _____

Country of Issuance _____

Street Address _____ Check if Roommate's address is the same

City _____ State _____ ZIP _____

Email address _____

Mbl# _____

Emergency Contact/Tel# _____

Notes: _____



Cardholder Name (If paying by credit card) _____

Credit Card # _____ Exp Date: _____

CVV# _____ Amount to be charged \$ _____

Credit Card Billing Address: Check if address is the same as above

Address _____ City _____

State _____ ZIP _____ Tel# _____

Sign _____ Date _____

SIGNATURE REQUIRED (for credit card use & acceptance of terms*)

*I (We) agree to pay according to the credit card issuer agreement. I understand and accept the cancellation fees/policy and other terms.

DEPOSIT & FINAL PAYMENT

An Initial Deposit of \$600 per person is due with Reservation Form to secure reservations. Final Payment Due Date is 90 days prior to departure.

***BOOKING DISCOUNT**

Make your Final Payment by check prior to the Final Payment Due Date & receive **\$400 per couple/\$200 per person Booking Discount!**

- Initial Deposit can be made by check or credit card to be eligible.
- Payments after Initial Deposit are part of Final Payment & must be made by check.

ONLINE BOOKING OPTION

Save time, postage & secure your seat for this group departure. Simply type: <https://res.premierworlddiscovery.com> into your web browser & use the Booking Number (Web Code) from this flyer to make your Deposit online in just a few minutes. No need to submit a Reservation Form if booking online.

PREMIER'S TRAVEL PROTECTION PLAN (TPP) \$499 per person (must purchase with Initial Deposit)**Part A – Cancellation Waiver provided by PWD**

I. Trip Cancellation Waiver (TCW) - Guarantees full refund on all payments, except the Trip Cancellation Waiver Fee itself in case of cancellation up to the time and date of departure due to the passenger's personal illness or death of an immediate family member. Medical/official documentation required.

II. Premier "Any Reason" Cancellation Waiver (ARCW) - Reimburses 75% of the cancellation fees in the form of a future travel credit certificate (FTCC) valid for 1 year, if you cancel more than 48 hours prior to scheduled departure for any reason not eligible for cash refund under the TCW (Part A – I.). FTCC is non-transferable, may not be redeemed for cash and does not include any credit for the Trip Cancellation Waiver Fee. **The Trip Cancellation Waiver Fee must be paid for with Initial Deposit and is refundable until 180 days prior to departure. The Trip Cancellation Waiver does not cover any single supplement charges due to an individual's traveling companion canceling prior to departure.** The Trip Cancellation Waiver is non-transferable and valid for each applicant only. The Trip Cancellation Waiver does not cover any services such as airline tickets not purchased through PWD. Cancellations, Refunds & Inquiries under Part A will be handled by PWD. Certain Exclusions and Restrictions apply.

Part B – Post Departure Travel Protection Plan* provided by USI

Includes coverage for: Trip Interruption (\$1,000); Trip Delay (\$100/Day-Max \$500); Baggage & Personal Effects (\$2,000); Baggage Delay (\$500); Emergency Accident/Sickness Medical Expense- excess coverage (\$30,000); Emergency Evacuation/Repatriation (\$150,000); Accidental Death & Dismemberment (\$25,000); Non-Insurance and Emergency Travel Assistance Services** (24/7). Claims & Inquiries under Part B will be administered by USI.

For full Part A and Part B plan details visit: premierworlddiscovery.com/TPP All Benefits described on this page are for general information basis only. There are certain restrictions, exclusions and limitation that apply to all insurance coverages. Plan benefits, limits and provisions may vary by state jurisdiction.

CANCELLATION FEES

Cancellations are subject to the following per person fees;

- Cancel 180 days prior to departure: \$200 pp is retained
- Cancel 179-90 days prior to departure: Deposit or TPP** is retained
- Cancel 89-60 days prior to departure: 50% of total price
- Cancel 59-30 days prior to departure: 75% of total price
- Cancel 29 days or less prior to departure/no shows: No refunds

**If TPP purchased

RESPONSIBILITY

Premier World Tours LLC dba Premier World Discovery (hereafter PWD), whose vouchers are used by respective agents for the passenger in all matters pertaining to hotel accommodations, sightseeing tours and transportation, hold themselves free of responsibility for any damages occasioned from any cause whatsoever. PWD will not be responsible for any damages or inconvenience caused by late arrivals, departures and change of schedule or other conditions nor will they be responsible for any act, omission, or event during the time the passenger is not on board their conveyance. The passage contract in use by the airline concerned, when issued, shall constitute the sole contract between the airline and the purchaser of this tour/cruise, and/or passenger. PWD does not hold any responsibility for the conduct of any of its members, hotel, motorcoach, cruiseline, train, airline or other personnel. PWD reserves the right to decline to accept or retain any person as a member of a tour/cruise at its discretion. PWD &/or its Tour Director retain the right to require any participant to withdraw from a tour/cruise at any time, if determined to be in the best interests of health, safety & general welfare of the tour/cruise group or of the individual participant. Arbitration - I/We agree, any and all disputes concerning this contract or any other material concerning the trip, or the trip itself must be resolved exclusively pursuant to binding arbitration in the state of California, pursuant to the then current rules of the American Arbitration Association. Payment of the deposit for this tour/cruise constitutes acceptance of these terms and conditions. CST #2048841-40

IMPORTANT CONDITIONS/NOTES

- A valid US passport is required for this tour and is the responsibility of each passenger. Passports should be valid for up to six (6) months beyond the travel dates. All names must be submitted to Premier exactly as they appear on passenger passports.
- Itinerary and hotels are subject to change.

AIR NOTE

Air Schedules may not be available until Final Trip Documentation is received. Air seats are assigned by the airline and sometimes not assigned until the day of travel. Air seat changes can only be attempted upon receipt of e-tickets and Final Trip Documentation at which time availability may be limited. If specific seat assignments or airline choice is extremely important to your reservation, we recommend you book land only and make your own air reservations. Please make this adjustment to land only/own air at time of tour reservation.

